



Moody 33 MK 1 – Celine

Make:	Moody	Boat Name:	Celine
Model:	33 MK 1	Hull Material:	Fibreglass (GRP)
Length:	33 ft	Draft:	4 ft 5 in
Price:	GBP 16,500	Number of Engines:	1
Year:	1977	Fuel Type:	Diesel
Condition:	Used	Total Power:	35 hp

Celine

A great example of this popular sailing boat. Ideal for families it offers good accommodation with 6 berths in 3 cabins. Centre cockpit cruiser, powered by a 35hp diesel BMC/Thornycroft serviced September 2017. A stable cruiser, she takes the rough extremely well, very seaworthy, stable and comfortable to sail. Shore power. Pressurised hot & cold water. Blue spray hood & dodgers. Last survey 2018.

Measurements

Cruising Speed: 6 kn

Covers

- Spray Hood
- Mainsail Cover

Accommodation

- 3 cabins
- Mikuni diesel warm air heating
- Heads - Jabsco sea toilet
- Shower
- Butane cooker, two burner and grill
- Galley sink with hot and cold pressurised water
- Waeco coolbox
- Pressurised water system, gas fired instant hot water
- 1 x 180L water tank
- Saloon table
- Fitted chart table

Engine

- BMC/Thornycroft
- Diesel
- 35hp
- 1 x fuel tank with 40 gallons capacity
- Last service September 2017

Electrics & Navigation

- NASA Paddlewheel
- Binnacle compass
- Fixed Garmin GPS128
- Navtex
- Echosounder
- Cobra DSC VHF with cockpit speaker
- 3 x batteries
- 300w inverter

- Shore power charger
- Anchor windlass

Sails & rigging

- Ratsey Mainsail (2001)
- Ratsey Furling Genoa (2008) UV strip replaced (2014)
- Cruising chute
- Storm job (to fit removable inner forestay)
- Spare mainsail
- Spare genoa
- Blue sprayhood and named spray dodgers
- Blue sailcover
- Blue cockpit cushions
- Bermudan sloop
- Proctor anodised aluminium spars
- Stainless steel standing rigging (replaced 2013)
- Slab mainsail reefing
- Admiral roller furler

Safety

- Liferaft
- Radar reflector
- Lifebuoys x 2
- Gas detector
- Stainless steel jackstays
- Manual and electric bilge pump
- Fire extinguishers

Additional Information

- Professionally faired and repainted in Awlgrip 2014
- Last survey 2018 for insurance
- Cockpit table
- Cockpit lockers

- Anchor and chain
- winches: 2 x Lewmar 2 speed genoa
- winches: 2 x spinnaker sheet
- winches: 4 x halyard and reefing at mast
- Boarding ladder
- Centre cockpit helm

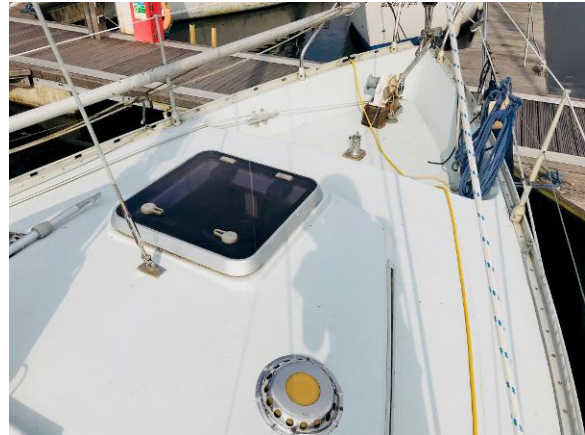
Disclaimer

The Company offers the details of this vessel in good faith but cannot guarantee or warrant the accuracy of this information nor warrant the condition of the vessel. A buyer should instruct his agents, or his surveyors, to investigate such details as the buyer desires validated. This vessel is offered subject to prior sale, price change, or withdrawal without notice.

Photos



Moody 33



Centre cockpit



Centre cockpit



Navigation





Aft cabin



Aft cabin



Aft cabin



Saloon/galley



Galley area



Galley



Chat table



Head



Forward cabin